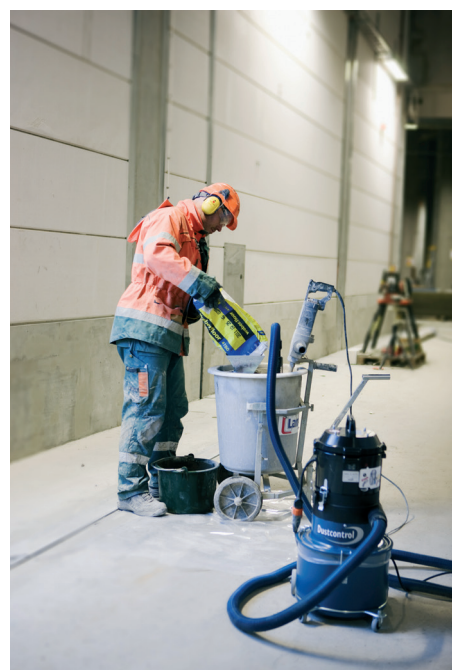


# Dustcontrol Guide



- A**
- Chipper
  - Reciprocating Saw
  - Diamond saw
  - Hammer Drill
  - Small die grinders
  - Circular saw
  - General cleaning
  - Depressed centre disc Ø5"/125
  - Cutting disc Ø5"/125
  - Wall grinder Ø5"/125
  - Sanding disc Ø5"/125
  - Orbital sander
  - Cleaning Ø1.5"/38
  - Welding, small extraction point

## A) DC1800 eco

The DC 1800 is small, lightweight and ideal for those that need a highly portable machine that is powerful enough for source extraction. Available also as an Autostart version and with a 60 lit container - DC 1800 XL

### TECHNICAL DATA

HxWxL	740x380x380 mm
Weight	22/10 lbs/kg
Suction hose 5 m	Ø38 mm
Max Q	114/190 cfm/m <sup>3</sup> /h
Max vacuum, kPa/inwg	115/230 V 21/84/24
Power consumption	1340/1285 W
Sound level	68 dB(A)



- B**
- Depressed centre disc Ø7" & 9"/230
  - Cutting disc Ø7" & 9"/230
  - Chasing disc 2xØ6"/150
  - Chipping tool
  - Floor grinding Ø16"-20"/400-500
  - Descaling tool
  - Straight grinder
  - Circular saw
  - Reciprocating Saw
  - Cleaning Ø2"/50

## A) DC2900 eco

The DC 2900 is our most popular dust extractor. It is suitable for vacuum cleaning and source extraction from handheld power tools (with up to 5" suction casings) and small table saws. Available also as an Autostart version. Available with discharge into plastic bag or container.

### TECHNICAL DATA

HxWxL	170x420x510 mm
Weight	22/14 lbs/kg
Suction hose 5 m	Ø38 mm
Max Q	114/190 cfm/m <sup>3</sup> /h
Max vacuum, kPa/inwg	115/230 V 21/84/24
Power consumption	1340/1285 W
Sound level	68 dB(A)



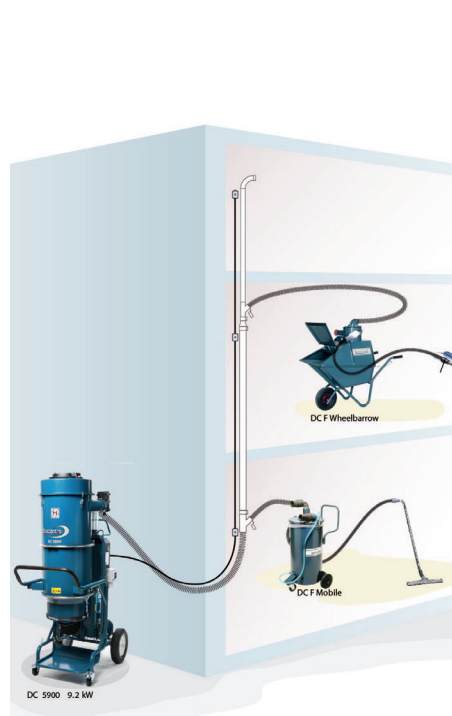
- C**
- Floor grinding more than Ø 20" /500
  - Depressed centre disc Ø12" /300
  - Cutting disc Ø12"/300
  - Concrete milling tool
  - Grinding disc Ø12" /300
  - Brick saw Ø16" /400
  - Suction lance Ø3" /76
  - Cleaning Ø2" /50

## B) DC3900 eco

DC3900 has a robust and adjustable chassis so that the machine can easily be transported, even in smaller vehicles. Available with discharge into plastic bag, container or longpack.

### TECHNICAL DATA

HxWxL	1220x600x750 mm
Weight	77/35 lbs/kg
Suction hose 5-10 m	Ø50 mm
Max Q	320/188 m <sup>3</sup> /h/cfm
Max vacuum, inwg/kPa	115/230 V 84/25
Power consumption	2600 W
Sound level	70 dB(A)



## 9,2 kWP Semimobile system

- Pre separator for:
- Grinding
  - Jackhammering
  - Milling
  - Coarse material collection
  - Material transport
  - Semimobile system

## C) DC5900

The standard DC 5900 4 kW is used for big hand held power tools and heavy duty cleaning on construction sites. The dust extractor is suitable for two smaller handheld power tools or one larger tool, such as a floor grinder, with a disk of up to 30"/750 mm. Available with discharge into plastic bag, container or longpack.

### TECHNICAL DATA

	4 kW	7,5 kW frequency controlled	9,2 kWP
HxWxL (mm)	1942x780x1160	1942x780x1160	1942x780x1160
Weight	176 kg	210 kg	210 kg
Inlet	Ø76 mm	Ø76 mm	Ø108 mm
Suction hose 7 m	Ø50 mm	-	-
Max Q	470 m <sup>3</sup> /h	630 m <sup>3</sup> /h	800 m <sup>3</sup> /h
Max vacuum	28 kPa	23 kPa	28 kPa
Power consumption	4 kW	7,5 kW	9,2 kW
Sound level	75 dB(A)	75 dB(A)	75 dB(A)



## DC F Mobile/Wheelbarrow

Pre-separators can be used in all applications where the extracted material is coarse or voluminous. These can be placed in the actual workplace for separate handling or recovery of the extracted material, or centrally.

### TECHNICAL DATA

	DC F Mobile	DC F Wheelbarrow
HxWxL	900x600x750 mm	1200x640x1350 mm
Weight	30 kg	50 kg
Inlet	Ø76 mm	Ø76 mm
Volume	75 liter	120 liter



## DC 50-W, 75-Weco

When working with concrete coring, large quantities of water have to be used and this water gets very dirty. Using wet-vac to effectively extract the water avoids the working area being wet and dirty.

### TECHNICAL DATA

	DC 50-W	DC 75-W
HxWxL	870x630x543mm	980x630x543mm
Weight	34kg	37kg
Outlet/Inlet	Ø50mm	Ø50mm
Hose length	5m	5m
Pump capacity	175 l/min	175 l/min
Vacuum motor	1200/1400	1200/1400
1 phase 110/230V (W)	550W	550W
Pump, 1 phase	75dB(A)	75dB(A)
Sound level	75dB(A)	75dB(A)



- Usage of wet-vac:
- Concrete coring
  - Demolition
  - Water damage



A Air cleaner should re-cycle the air in working area minimum 10-15 times/h.

Example:  
A bathroom 4x3 m x 2,5 m = 30 m<sup>3</sup>  
30 m<sup>3</sup> x 15 (ggr) = 450me  
In this case an Air Cube 500 would be ideal.

## DC AirCube eco

The DC AirCube is designed to separate fine and hazardous dusts. An example of such particulate could be silica dust, which is found in concrete, brick, grout, mortar and drywall compound.

### TECHNICAL DATA

	DC AirCube 2000	DC AirCube 1200	DC AirCube 500
HxWxL	1020x560x700 mm	860x430x550 mm	380x340x500 mm
Weight	30 kg	23 kg	13 kg
Max Q	1800 m <sup>3</sup> /h	1100 m <sup>3</sup> /h	500 m <sup>3</sup> /h
Power consumption 115/230V	350/505 W	195/385 W	145/210 W
Sound level low speed	max 60-68 dB(A)	max 60-68 dB(A)	45 dB(A)
high speed			68 dB(A)

### Filter AirCube

- 2000**  
HEPA H13 filter Art.no 42896  
Pre filter Art.no 42917
- 1200**  
HEPA H13 filter Art.no 42940  
Pre filter Art.no 42918
- 500**  
HEPA H13 filter Art.no 42692  
Pre filter Art.no 42690 (10-pcs)



## Suction casing

Grinder/Cutting disk Ø	Rubber collar Ø	Art.no
F 1 1/2 - 3" (38-75mm)	27mm	6833
F 4" (100mm)	40-46mm	6670
F 4 1/2" (115mm)	40-46mm	6671
F 5" (125mm)	40-49mm	6672
F 5" (125mm)	50mm	6673
F 7" (175mm)	54-61mm	6674
F 7" (175mm)	62-77mm	6675
D 4 1/2" (115mm)	40-46mm	6681
D 5" (125mm)	40-49mm	6682
D 5" (125mm)	50mm	6673
D 7" (175mm)	54-61mm	6683
D 7" (175mm)	62-77mm	6684
N, K 4 1/2" (115mm)	40-49mm	6676
N, K 5" (125mm)	40-45mm	6677
N, K 5" (125mm)	46-53mm	6678
N, K 7" (175mm)	62-77mm	6679
S 5" (125 mm)	50-77 mm	6680
S 6" (150 mm)	Special	6023



## Filter and plastic bags

	DC 1800	DC 2900	DC 3900	DC 5900
Plastic bag 10 pcs	Art.no 42291	Art.no 42702	Art.no 43619	Art.no 46145
Straps	Art.no 4313	Art.no 4313	Art.no 4313	Art.no 4613
Fine filter standard	Art.no 42029	Art.no 42029	Art.no 42026	Art.no 429204
Fine filter polyester	Art.no 42028	Art.no 42028	Art.no 42025	Art.no 429204
Fine filter PTFE	Art.no 42027	Art.no 42027	Art.no 42024	Art.no 429203
HEPA H13 filter	Art.no 42027	Art.no 42027	Art.no 42024	Art.no 42869 (4 kW)
HEPA H13 filter				Art.no 42807 (9,2kW)



## Hoses and couplings

Hoses	Couplings	Swivel couplings
Std 2001 Antist. 2024	DC 5800c	DC 1800
Std 2401 Antist. 2013	DC 5900c	DC 2900c
Std 2111 Antist. 2012	DC 1800	DC 50-W
Std 2112 Antist. 2005	DC 2900c	DC 75-W
	DC 3800c	DC 3900c
	DC 3900c	

## Accessories

